

Ryegrass, Annual

Lolium multiflorum

Description

Shiny, dark green, annual bunchgrass with smooth leaves. Grows 2 to 4 feet tall in seed head stage.

Uses

Fall and winter pasture, hay, erosion control.

Advantages

High nutritive quality and palatability, excellent seedling vigor, reseeds itself easily, tolerates close grazing.

Disadvantages

Not always winter-hardy. Low quality after heading. Can be overly competitive in mixtures. Reseeds prolifically and can be a troublesome weed in crop fields.

Seeding

Rate: 20-30 lb/a

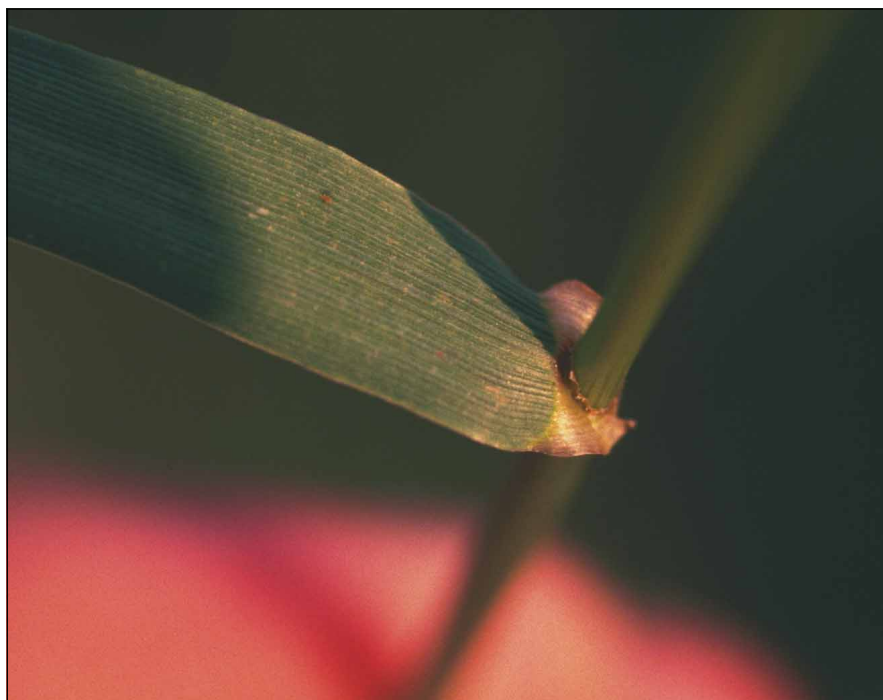
Depth: ¼-½ in

Date: Aug 15-Oct 1

Harvest

First harvest: Apr 20-May 15

Annual yield: 1-3 tons dry matter/a



Annual ryegrass leaves emerge rolled with auricles that wrap around the stem. Stems are round. (For seed head, see *Ryegrass, Perennial*.)