



HEALTHY HOME

Beware of Look-Alikes

Things aren't always as they seem, and some hazardous products look like items that are safe and consumable. In some cases, the actual products look very similar. In others, it's the packaging that is almost identical. Following is a list of hazardous products and their safe look-alikes. While this list is not in any way complete, it should help you think about products in your home that have dangerous look-alikes.

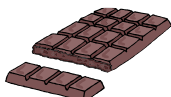
Package Look-Alikes:

- | | |
|-------------------|-----------------|
| Powdered cleanser | Parmesan cheese |
| Dog biscuits | Animal crackers |
| Cat food | Tuna fish |



Product Look-Alikes:

- | | |
|---------------------|--------------------------------|
| Red cold tablets | Cinnamon candy |
| Liquid pine cleaner | Apple juice |
| Glass cleaner | Blue fruit drink |
| Motor oil | Honey |
| Antifreeze | Lime or lemon-lime drinks |
| Alcohol | Water |
| Rat or mouse poison | Sunflower seeds, candy, cereal |
| Antacid tablets | Candy |
| Powdered pesticides | Flour |
| Children's vitamins | Candy, gumballs |
| Grape cold medicine | Grape-flavored drinks |
| Chocolate laxatives | Chocolate candy bars |



HEALTHY HOME

Beware of Look-Alikes

Things aren't always as they seem, and some hazardous products look like items that are safe and consumable. In some cases, the actual products look very similar. In others, it's the packaging that is almost identical. Following is a list of hazardous products and their safe look-alikes. While this list is not in any way complete, it should help you think about products in your home that have dangerous look-alikes.

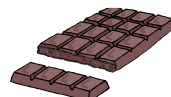
Package Look-Alikes:

- | | |
|-------------------|-----------------|
| Powdered cleanser | Parmesan cheese |
| Dog biscuits | Animal crackers |
| Cat food | Tuna fish |



Product Look-Alikes:

- | | |
|---------------------|--------------------------------|
| Red cold tablets | Cinnamon candy |
| Liquid pine cleaner | Apple juice |
| Glass cleaner | Blue fruit drink |
| Motor oil | Honey |
| Antifreeze | Lime or lemon-lime drinks |
| Alcohol | Water |
| Rat or mouse poison | Sunflower seeds, candy, cereal |
| Antacid tablets | Candy |
| Powdered pesticides | Flour |
| Children's vitamins | Candy, gumballs |
| Grape cold medicine | Grape-flavored drinks |
| Chocolate laxatives | Chocolate candy bars |



Take a Look Around

Inspect your home room by room to locate look-alikes and other hazardous products.

Kitchen

Look for things such as drain openers, detergents, oven sprays, and other cleaners that can hurt you and your children.



Put safety latches or locks on all cabinets and drawers with harmful products.

Bathroom

Medicine, makeup, mouthwash, first aid supplies, deodorants, cleaners, and other items in your medicine cabinet can hurt children. Keep them out of their reach.



Bedroom

Keep medicine, medications, perfumes, makeup, and cigarettes out of children's reach.

Living Room

Things to look for in the living room include liquor, cigarettes, furniture polish, lamp oil, and some plants. Keep these out of reach.

Garage, Basement, and Laundry Room

Check for chemicals and poisons that can hurt or even kill a child:

bleach, anti-freeze, gasoline, kerosene, car polishes, car batteries, paints, paint removers, mothballs, bug spray, road salt, and more.



It's safest to keep children out of these places altogether.

Prepared by Kimberly B. Henken, M.S., Extension Associate for Environmental Issues, and Denise Rennekamp, M.S., Extension Associate for Health August 2004

Reference:

Healthy Homes Partnership. "Help Yourself to a Healthy Home," ©2002. Regents of the University of Wisconsin System.

For more information, contact your County Extension Agent for Family and Consumer Sciences or visit the Web site for Family and Consumer Sciences, College of Agriculture, University of Kentucky, at www.ca.uky.edu/agcollege/fcs

Educational programs of Kentucky Cooperative Extension serve all people regardless of race, color, age, sex, religion, disability or national origin.

Take a Look Around

Inspect your home room by room to locate look-alikes and other hazardous products.

Kitchen

Look for things such as drain openers, detergents, oven sprays, and other cleaners that can hurt you and your children.



Put safety latches or locks on all cabinets and drawers with harmful products.

Bathroom

Medicine, makeup, mouthwash, first aid supplies, deodorants, cleaners, and other items in your medicine cabinet can hurt children. Keep them out of their reach.



Bedroom

Keep medicine, medications, perfumes, makeup, and cigarettes out of children's reach.

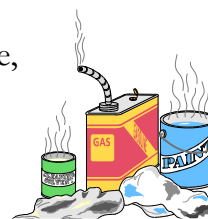
Living Room

Things to look for in the living room include liquor, cigarettes, furniture polish, lamp oil, and some plants. Keep these out of reach.

Garage, Basement, and Laundry Room

Check for chemicals and poisons that can hurt or even kill a child:

bleach, anti-freeze, gasoline, kerosene, car polishes, car batteries, paints, paint removers, mothballs, bug spray, road salt, and more.



It's safest to keep children out of these places altogether.

Prepared by Kimberly B. Henken, M.S., Extension Associate for Environmental Issues, and Denise Rennekamp, M.S., Extension Associate for Health August 2004

Reference:

Healthy Homes Partnership. "Help Yourself to a Healthy Home," ©2002. Regents of the University of Wisconsin System.

For more information, contact your County Extension Agent for Family and Consumer Sciences or visit the Web site for Family and Consumer Sciences, College of Agriculture, University of Kentucky, at www.ca.uky.edu/agcollege/fcs

Educational programs of Kentucky Cooperative Extension serve all people regardless of race, color, age, sex, religion, disability or national origin.