

# UK College of Agriculture Field Day

“Agriculture in a New Bioeconomy”

**Thursday, June 12, 2008**

**Registration/Exhibits 2:00 p.m.**



## Field Clinics/Workshops

**3:00-5:30 pm**

Hay Production/Equipment Demo

Tobacco Transplanting

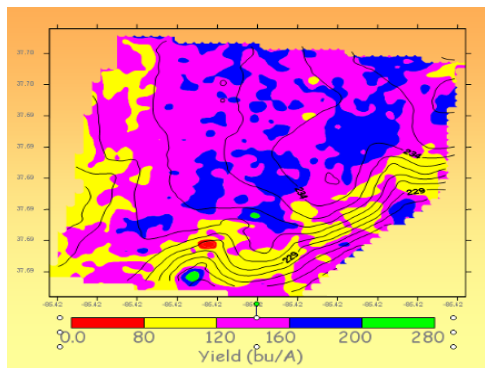
Horse Pasture Evaluation

Weed ID & Resistant Weeds

Corn Growth and Development

Assessing Soil Productivity

Organic Crop Production



## Directions

**From I-75 (North of Lexington):**

Take the Kentucky Horse Park exit (I-75 Exit 120), travel one mile past the Horse Park and follow field day signs.

**From I-64, I-75, or New Circle Road:**

Take the Newtown Pike exit (I-64/I-75 Exit 115), travel north toward Iron Works Pike, turn left, then follow field day signs.

## Spindletop Farm

Lexington, Kentucky

Evening Meal Available for purchase



## Field Tours 6:00-8:00 pm

### ▪Equine

- Research/New Facilities
- Pasture Management

### ▪Forages

- New Varieties/Species
- Weed Management

### ▪Crops

- Tobacco production
- Corn Production for Livestock
- Wheat for Grain, Forage, Straw
- Biofuel Crops
- Pest Management

## Questions

Contact Your County Extension Agent  
or

Dr. J.D. Green, Field Day Chairman  
(859) 257-4898 jdgreen@uky.edu

Educational programs of the Kentucky Cooperative Extension Service serve all people regardless of race, color, age, sex, religion, disability, or national origin.